

Crocidurobia transvaalensis sp. n., A NEW
MYOBIID FROM SOUTH AFRICA
(ACARINA : PROSTIGMATA, MYOBIIDAE)*

Crocidurobia transvaalensis sp. n., A NEW
MYOBIID FROM SOUTH AFRICA
(ACARINA : PROSTIGMATA, MYOBIIDAE)*

by A. FAIN** and F. ZUMPT***

The species that we describe here has been found by the junior author on a shrew, in Transvaal.

This species is close to *Crocidurobia multisetosa* (LUKOSCHUS and DRIESSEN, 1969) but it is clearly distinguished from the latter by the following characters :

In the female :

1) There are 9 median additional hairs between the *ic 4* and the *l 5* setae instead of 14 in *C. multisetosa*. These additional hairs are much stronger and situated more posteriorly than in that species.

2) The *d 4*, *l 3*, *l 4* setae are much thicker and approximately from 2 to 3 times longer than the *d 3* setae.

3) The *vi* and *ve* setae are situated on a transverse punctate shield.

4) The two paramedian triangular prolongations of the cuticle along the posterior margin of coxae I are smaller.

5) There is a small median genital copulatory orifice, with sclerotized walls, immediately in front of *ic 4* setae.

* Déposé le 11 mai 1974.

** Institut de Médecine Tropicale, Nationalestraat 155, B-2000 Antwerpen.

*** South African Institute for Medical Research, Johannesburg South Africa.

In the male :

- 1) The genital orifice is more anterior and is situated in front of the *d 1* setae.
- 2) The *l 1* setae are long and strong.

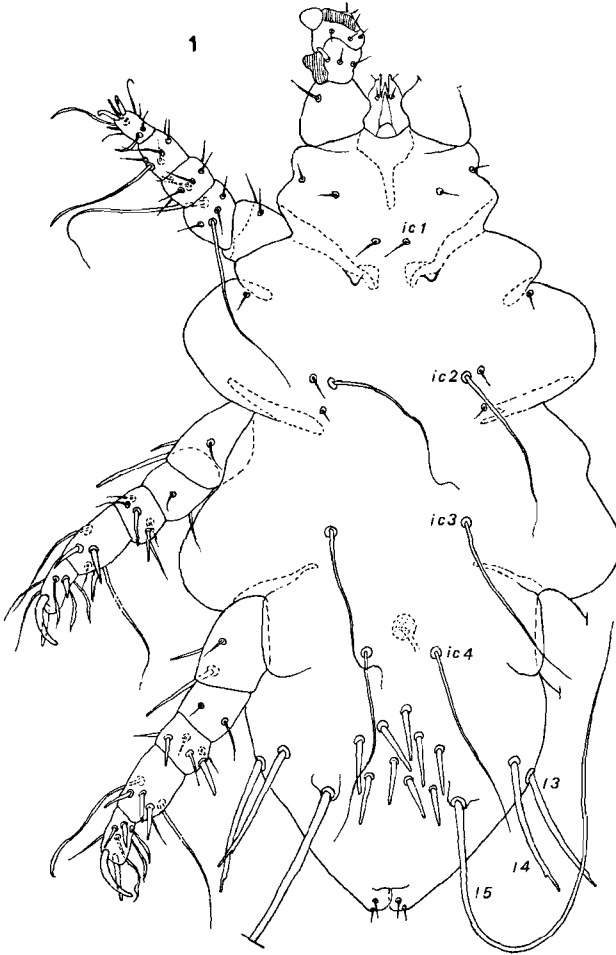


FIG. 1 : *Crocidurobia transvaalensis* sp. n. Female holotype, ventrally.

FEMALE (holotype) (fig. 1-2) : Total length (gnathosoma included but without the palps) 561 μ , maximum width 280 μ .
Dorsum : *vi*, *ve*, *sci*, *sce* and anterior *d* and *l* setae as in C.

multisetosa but stronger. The *d* 3, *d* 4 and *d* 5 setae are 33 μ , 75 μ and 12 μ long respectively. The *l* 2, *l* 3 and *l* 4 setae are strong and approximately 100 μ long. Genital lobes well develo-

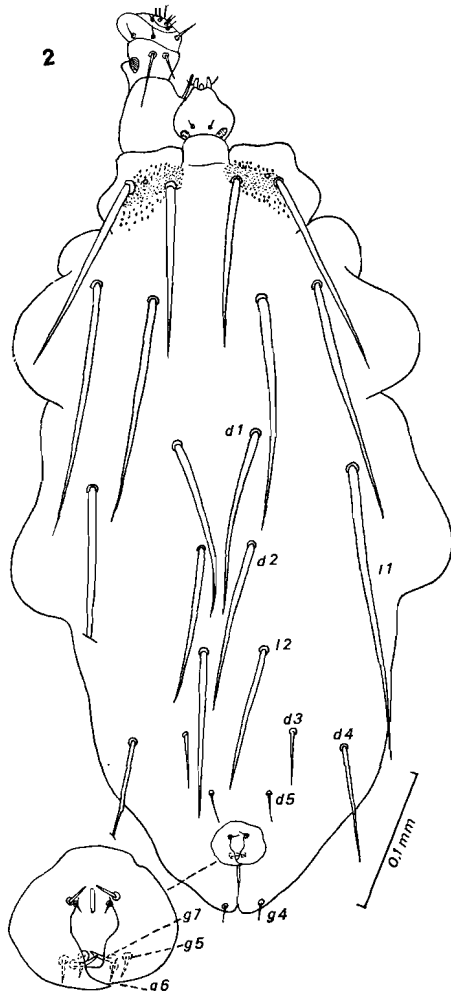


FIG. 2: *Crocidurobia transvaalensis* sp. n. Female holotype, dorsally.

ped. *Venter* : Setae as in *C. multisetosa* except de additional setae which are thick and 27 to 40 μ long. Other characters as in *C. multisetosa*.

MALE (allotype) (fig. 3-4) : Total length 480 μ , maximum width 175 μ . *Dorsum* : *vi*, *ve*, *sci* and *sc e* as in *C. multisetosa* : The *d 1*, *d 2*, *d 3* and *l 2* are short and thin and more or less on a

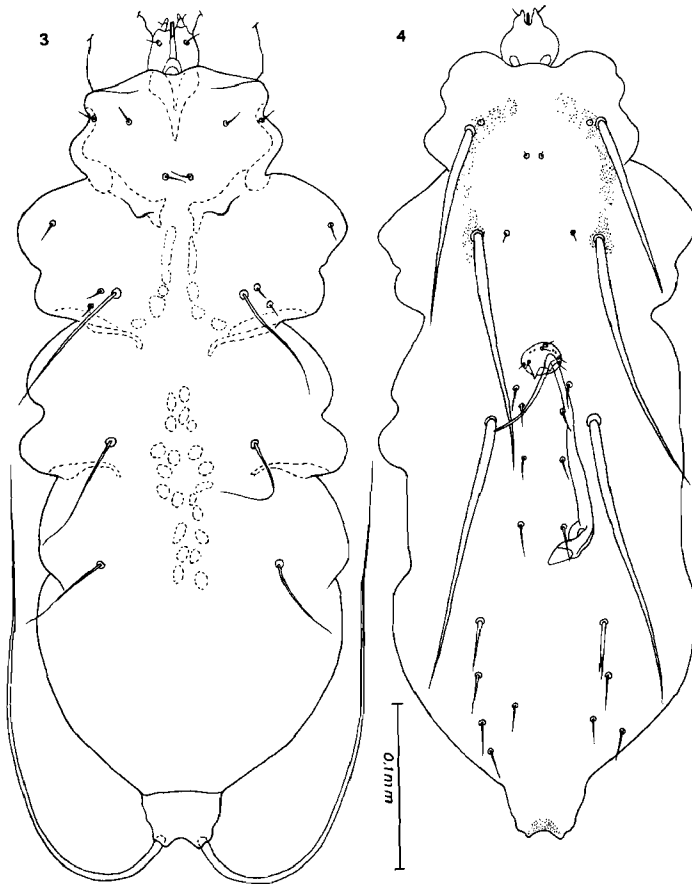


FIG. 3-4 : *Crocidurobia transvaalensis* sp. n. Male allotype.

longitudinal line. The *l 1* is subequal to *sc e*. Genital orifice situated in front of *d 1*, at the level of coxa III and more anterior than in *C. multisetosa*. Penis 180-190 μ long, partly protruded from the body. Other characters as in *C. multisetosa*.

Host and locality :

On a shrew, Muldersdrift, Transvaal, 20.X.1973 (Coll. Z. ZUMPT) (holotype female, allotype male).

Types : in the Musée de Tervuren, Belgium.

BIBLIOGRAPHY

- FAIN A. — Les Myobiidae d'Afrique au Sud du Sahara et de Madagascar (Acarina : Trombidiformes). *Ann. Mus. R. Afr. Centr. Tervuren, Sci. Zool.* : (sous presse).
- LUKOSCHUS F. and DRIESSEN F. M., 1969. — *Eadiea multisetosa* sp. n. (Myobiidae : Trombidiformes). *Zool. Anz.*, 182 (5/6) : 383-390.
-

