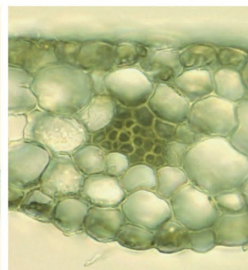
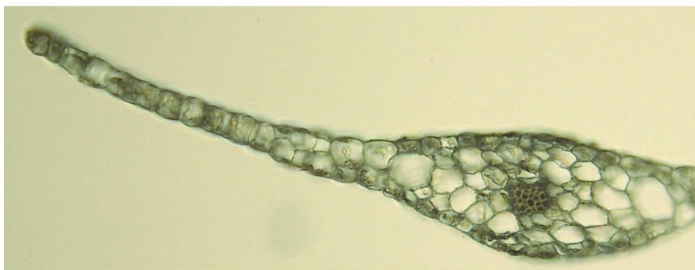




Figs 436 and 437 (next page). *Symphyogyna podophylla* (Thunb.) Nees & Mont.
 Synonym: *Symphyogyna rigida* Steph. Plant dendroid, with furcate branches. Branches of aerial frond (2-)2.5-3(-4) mm wide, usually elongate-ovate, unistratose for (0.5-)0.7-0.75 of width. Margin dentate to \pm shortly spinose. Inframarginal cells of unistratose area of frond branches 50-60(-65) x 50-75 μ m. Cuticle of frond branches smooth. Female involucre a \pm deeply lacinate scale. **Habitat:** On moist soil or rocks in montane forest up to the *Dendrosenecio-Lobelia stuhlmannii* paramo, 2000-3600 m. **Distribution in Rwanda:** **Volcano NP:** Karisimbi, Bisoke, Sabinyo, Gahinga, Muhavura. **Gishwati Forest:** Gikungu. **Nyungwe NP:** Waterfall c. 3 km E of Pindura, Kamiranzovu, Uwinka. **Distribution in Africa:** Bioko, Cameroon, DR Congo, Ethiopia, Uganda, Kenya, Tanzania, Malawi, Zambia, Zimbabwe, South-Africa. Also Mauritius, Réunion.



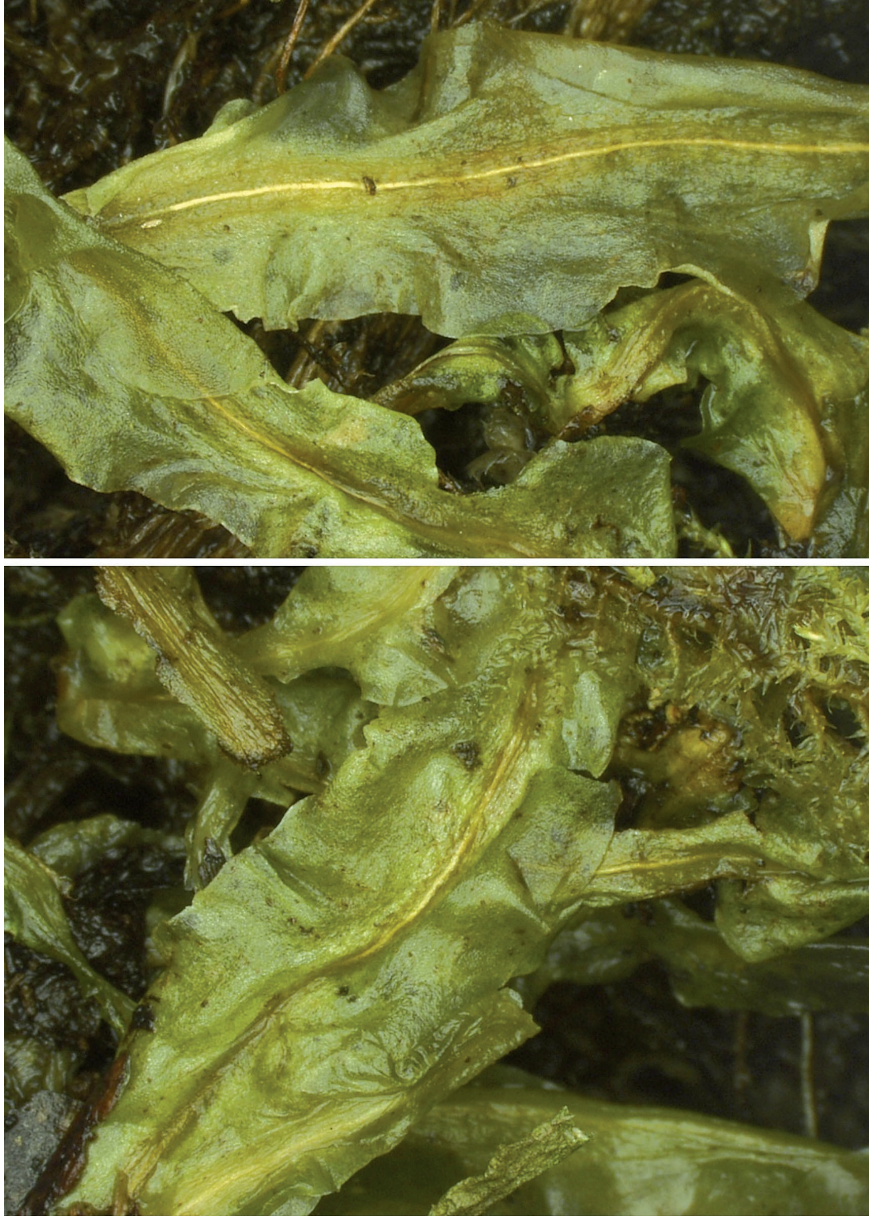


Fig. 438. *Symphyogyna volkensis* Steph.

Thalli grass-green (without secondary pigmentation), usually flat, procumbent, (3-)5-9(-10) mm wide. Margin entire. Marginal slime-hairs present (often, however, soon disappearing at some distance from shoot tip). **Habitat:** Rocks and streams in montane forests, 2450-3300 m. **Distribution in Rwanda:** **Volcano NP:** Karisimbi, Gahinga. **Nyungwe NP:** Rwasekoko. **Distribution in Africa:** DR Congo, Uganda, Kenya, Tanzania.



Fig. 439. *Targionia hypophylla* L.

Thalli leathery, linear, deep green, up to 30 x 2.7-3.5 mm, margin black or blackish-purple, ruficolous. Dorsal surfaces finely reticulate, with small whitish pores. Ventral surfaces with black or blackish purple scales in two rows. Autoicous or dioicous. Gynoecia ventrally below apex of thallus. **Habitat:** Quartzitic rocks fissures, humid roadside in montane forest, 1700-2300 m. **Distribution in Rwanda: Volcano NP:** Foot of Muhabura. **Nyungwe NP:** Cyamudongo. **Akagera:** near Rugarama. **Distribution in Africa:** Ghana, Nigeria, Chad, Bioko, Cameroon, Djibouti, Eritrea, Ethiopia, Uganda, Kenya, Tanzania, Malawi, Zambia, Zimbabwe, Lesotho, Namibia, South Africa. Also North America, Europe, the Mediterranean, Cape Verde, Comoros, Madagascar, Réunion.

10.3. Hornworts



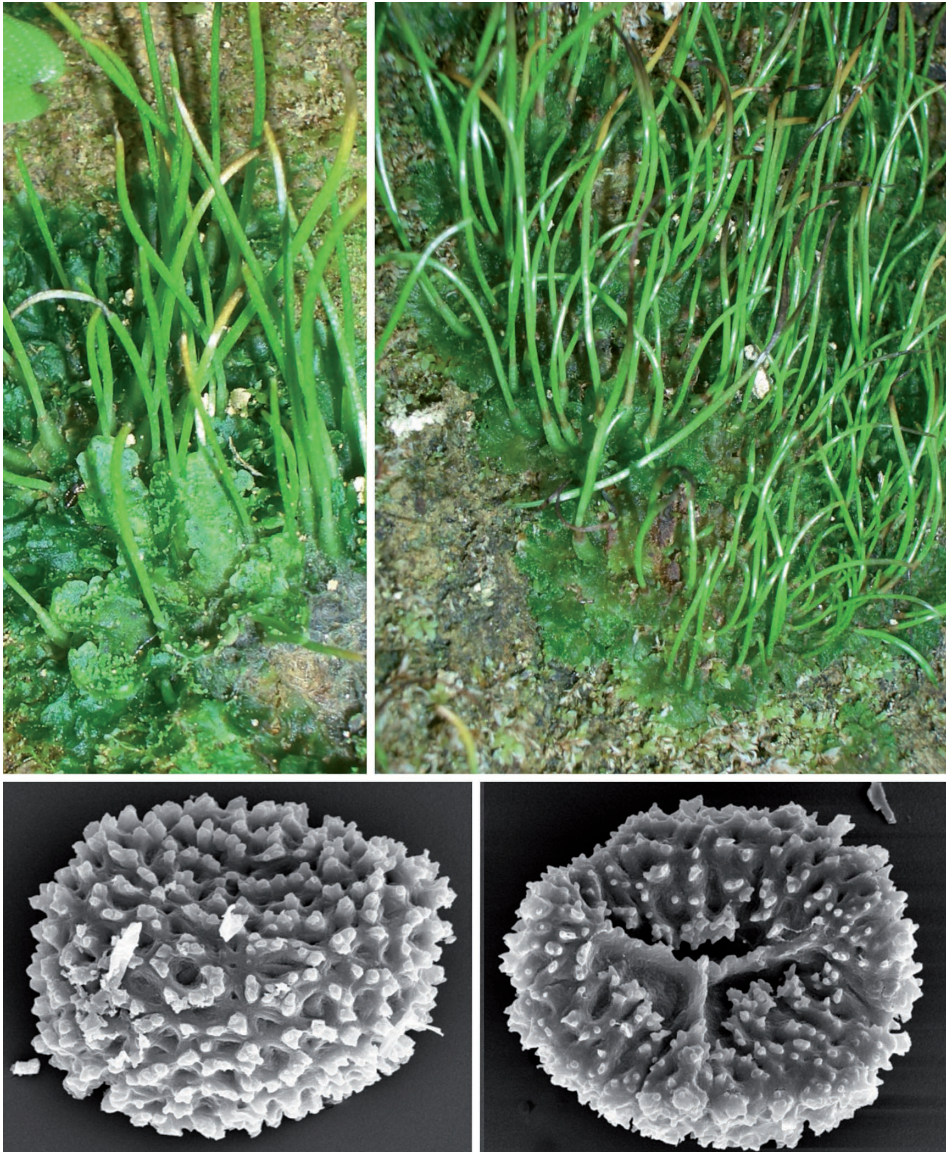


Fig. 440. *Anthoceros caucasicus* Steph.

Synonym: *Anthoceros mandonii* Steph. Thallus-margin remotely or somewhat pinnately dissected into broad rectangular lobes. Capsule c. 1-3 cm long. Spores (42-)45-50(-55) μ m in diameter, distal surface with short, often sinuate and shortly branched lamellae, or a network of lamellae forming ridges and peaks, proximal surface with conspicuous trilete ridges and sinuate lamellae. **Habitat:** Open soil and roadcuts along paths in montane forests, 1600-2000 m. **Distribution in Rwanda: Nyungwe NP:** Cyamudongo Forest.

Distribution in Africa: Sierra Leone, DR Congo. Also Southern Europe, Caucasus, Azores, Madeira, Canaries, Caribbean Islands, Central America.

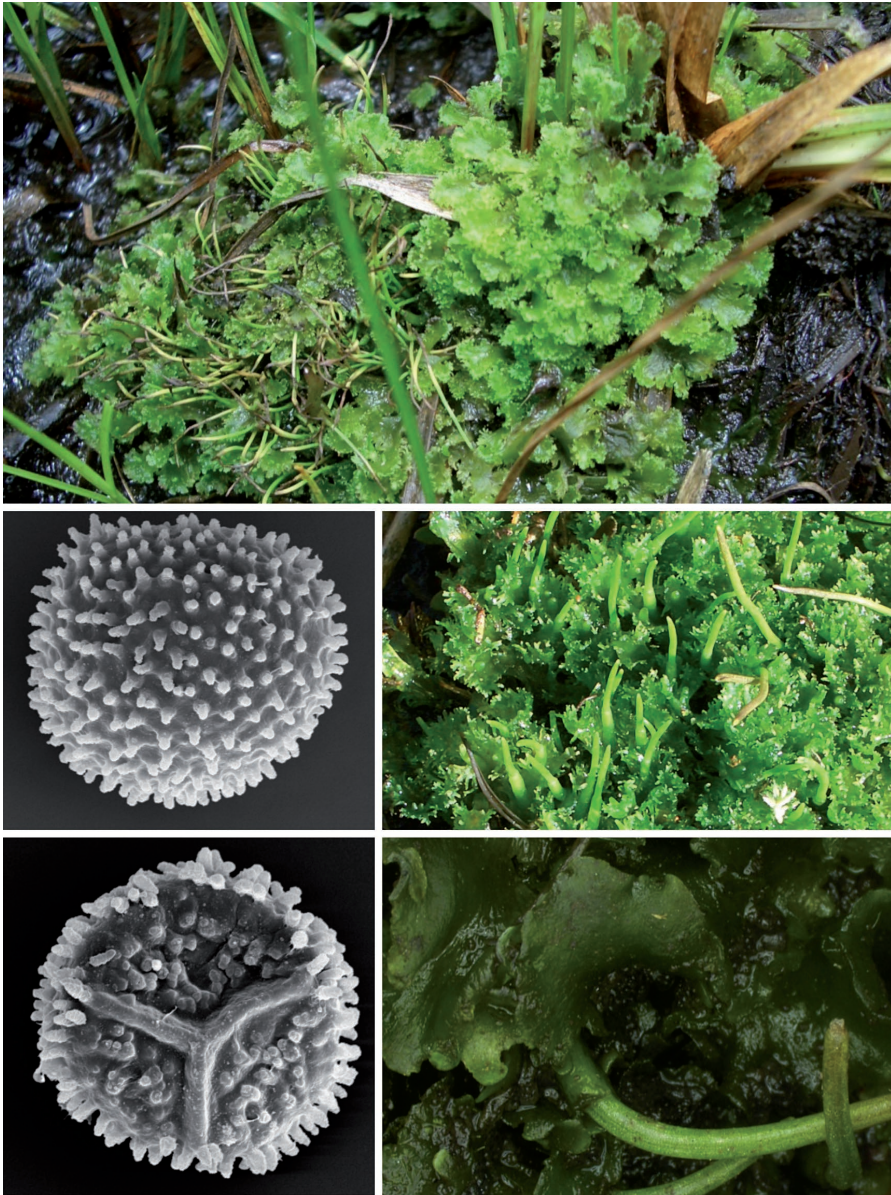


Fig. 441. *Anthoceros myriandroecius* Steph.

Thallus-margin densely dissected into narrow rectangular, truncate lobes, sometimes crispate. Capsules up to 3 cm long. Spores 50-60 μm in diameter, distal surface with baculate to spinate up to 4 μm long tubercles, proximal surface covered with small subglobose tubercles. **Habitat:** Open soil in montane swamps between Cyperaceae, 2500 m. **Distribution in Rwanda: Nyungwe NP:** Rwasenkoko, Pindura. **Distribution in Africa:** Kenya, Tanzania.

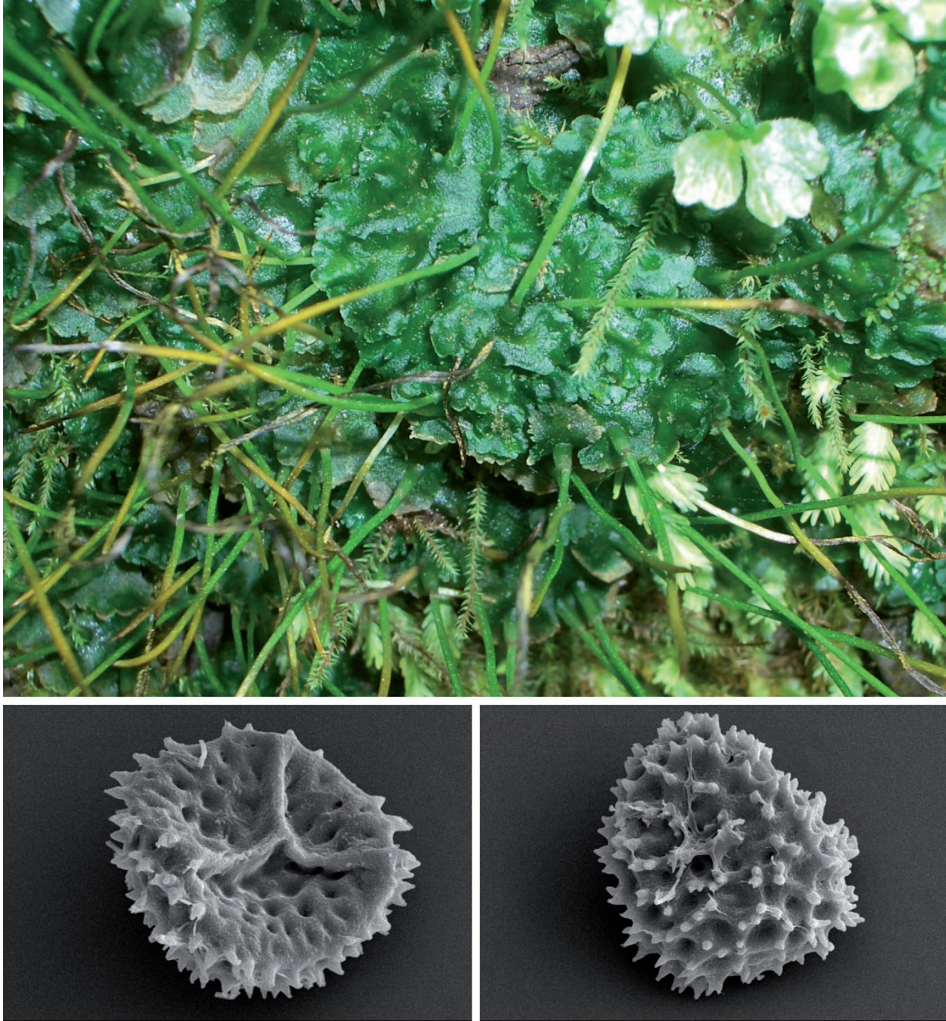


Fig. 442. *Anthoceros punctatus* L.

Thallus-margin remotely or somewhat pinnately dissected into broad rectangular lobes. Capsules up to 5-7 cm long. Spores 42-62 μm in diameter, distal surface with numerous spines or tubercles, tubercles compressed and often divided distally, proximal surface foveolate and nearly smooth. **Habitat:** Open soil and roadcuts along paths in montane forests, 1600-3000 m. **Distribution in Rwanda:** **Volcano NP:** between Sabyinyo and Gahinga, Lac Ruhondo. **Gishwati Forest:** Gikungu. **Nyungwe NP:** Gisakura. **Central Rwanda:** Butare. **Distribution in Africa:** DR Congo. Also Europe, Canaries, Cape Verde, North America, South America.

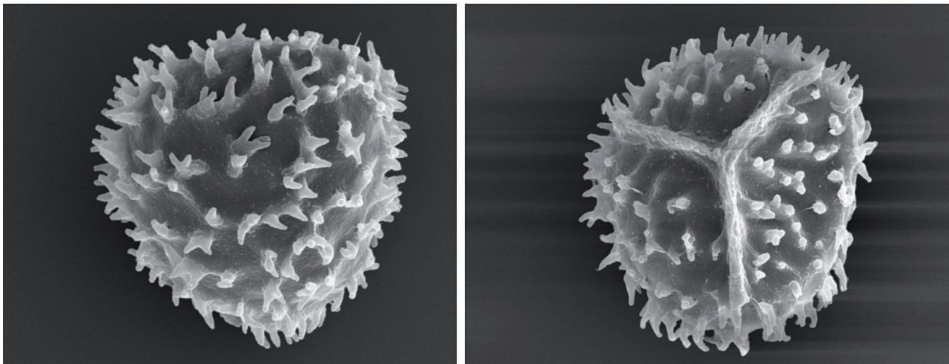


Fig. 443. *Anthoceros sambesianus* Steph.

Thallus-margin remotely or somewhat pinnately dissected into broad rectangular lobes. Spores 34-42 μm in diameter, distal surface covered with spinulate tubercles less than 3 μm long, often united at base, proximal surface with indistinct reticulate ridges and small subglobose tubercles. **Habitat:** Open soil and roadcuts along paths in montane forests, 2100-2500 m. **Distribution in Rwanda:** Nyungwe NP: Uwinka, Karamba. **Distribution in Africa:** Zambia, Zimbabwe.



Fig. 444. *Notothylas flabellata* Steph.

Thalli lobed or dichotomously branched, forming small rosettes usually 1-2 cm long, variously lobed or lacinate, with large mucilage-containing cells, large intercellular cavities lacking. Capsules short, usually not exceeding 5 mm of length, lying more or less horizontally on thallus, almost entirely covered by involucrem, columella lacking. Spores black, tuberculate on both faces, 25-30 μm in diameter. **Habitat:** Open soil and roadcuts along paths in montane forests, 2000 m (usually below 1000 m). **Distribution in Rwanda:** Nyungwe NP: Cyamudongo Forest. **Distribution in Africa:** Cameroon, Angola.



Fig. 445. *Phaeoceros carolinianus* (Michx.) Prosk.

Thalli deep to dark green, fleshy, variable in size, usually forming rosettes, without a midrib, margins entire to crenate. Dorsal surfaces smooth. Transverse sections solid, without mucilaginous cavities, with scattered *Nostoc* colonies. Monoicous. Capsules when mature erect, linear, with epidermal stomata and well developed columella, up to 3-4 cm long. Spores yellow, with distal surfaces densely papillate to spinulate throughout.

Habitat: Open soil and roadcuts along paths in montane forests, 1600-3000 m.

Distribution in Rwanda: **Volcano NP:** Sabinyo, Gahinga, Muhavura, Mukamira between Ruhengeri and Gisenyi. **Gishwati Forest:** Gikungu. **Central Rwanda:** Lac Bulera, Butare.

Nyungwe NP: Cyamudongo Forest, Rwasekoko, Uwinka, Gisakura. **Distribution in Africa:** Sierra Leone, Cameroon, DR Congo, Ethiopia, Uganda, Kenya, Tanzania, Angola, Zimbabwe, Malawi, Namibia, South Africa. Also Europe, Iceland, North America, Canaries, Madeira, Cape Verde, Madagascar, Réunion, Asia.



Fig. 446. *Phaeoceros fulvisporus* (Steph.) Hasegawa

Synonym: *Anthoceros fulvisporus* Steph. Similar to *Phaeoceros carolinianus* and differing mainly in the spores with distal surfaces densely papillate with scattered lamellae consisting of several papillae united at base. **Habitat:** Open soil and roadcuts along paths in montane forests, 2400-2500 m. **Distribution in Rwanda:** Nyungwe NP: Rwasekoko.

Distribution in Africa: Tanzania, South Africa.

11. References

- ARNELL, S. 1956. Hepaticae collected by O. Hedberg *et al.* on the East African mountains. *Arkiv för Botanik* 3: 517-562.
- ARNELL, S. 1963. *Hepaticae of South Africa*. Swedish National Science Council, Stockholm: 441 pp.
- BAMPS, P. 1975. Itinéraire et lieux de récolte de Mildbraed lors de sa première expedition en Afrique Centrale (1907-1908). *Bulletin du Jardin Botanique national de Belgique* 45: 159-179.
- BARTHLOTT, W., FISCHER, E., FRAHM, J.-P. & SEINE, R. 2000. First experimental evidence for zoophagy in the hepatic *Colura*. *Plant Biology* 2: 93-97.
- BINDSEIL, R. 2008. *Ruanda im Lebensbild des Afrikaforschers, Literaten und Kaiserlichen Residenten Richard Kandt (1867-1918)*. - *Le Rwanda vu à travers le portrait biographique de l'explorateur de l'Afrique, homme de lettres et resident imperial Richard Kandt (1867-1918)*. – *Rwanda as Depicted in the Biography of Richard Kandt, Explorer of Africa, Man of Letters, and Imperial Resident (1867-1918)*. Trier: 399 pp.
- BISCHLER, H. 1970. Les espèces du genre *Calypogeia* sur le continent africain et les îles africaines. *Revue Bryologique et Lichénologique* 37: 63-134.
- BISCHLER, H. 1993. *Marchantia* L. The European and African taxa. *Bryophytorum Bibliotheca* 45: 1-129.
- BISCHLER-CAUSSE, H. & LONG, D.G. 1993. Taxonomic results of the BRYOTROP-Expedition to Zaire and Rwanda. 6. Aytoniaceae, Marchantiaceae. *Tropical Bryology* 8: 53-54.
- BROTHERUS, V.F. 1914. Musci. In: MILDBRAED, J. (Ed.). *Wissenschaftliche Ergebnisse der Deutschen Zentral-Afrika Expedition 1907-1908*, II: 136-176.
- BRUGGEMAN-NANNENGA, I. 2006a. Bryophyte flora of Uganda. 6. Fissidentaceae (Part 1). *Journal of Bryology* 28: 53-62.
- BRUGGEMAN-NANNENGA, I. 2006b. Bryophyte flora of Uganda. 6. Fissidentaceae (Part 2). *Journal of Bryology* 28: 139-148.
- BUCHBENDER, V. & FISCHER, E. 2004. *Drepanolejeunea vandenberghenii* (Jungermannioptida, Lejeuneaceae) a previously overlooked new species from Rwanda including comments on *Drepanolejeunea physaefolia* and *Harpalejeunea fischeri*. *Journal of Bryology* 26: 273-283.
- BURGHARDT, M., GRADSTEIN, R. & VAÑA, J. 2006. Discovery of the African liverwort genus *Cephalojonesia* (Cephaloziellaceae) in Mexico. *Journal of the Hattori Botanical Laboratory* 100: 35-39.
- BURGHARDT, M. & GRADSTEIN, R. 2008. A revision of *Tylimanthus* (Acrobolbaceae, Marchantiophyta) in Tropical America, Africa, and Macaronesia. *Fieldiana: Botany, N.S.* 47: 199-210.

- CHUAH-PETIOT, M.S. 2003. *Mosses, Liverworts & Hornworts of Kenya*. Paris: 1-273.
- DEMARET, F. 1940. Prodrome des Bryophytes du Congo Belge et du Ruanda-Urundi. I. Musci. *Bulletin du Jardin Botanique de l'Etat, Bruxelles* 16: 21-104.
- DEMARET, F. 1942. Prodrome des Bryophytes du Congo Belge et du Ruanda-Urundi. II. Hepaticae. *Bulletin du Jardin Botanique de l'Etat, Bruxelles* 16: 287-310.
- DEMARET, F. 1946. Prodrome des Bryophytes du Congo Belge et du Ruanda-Urundi. Musci, Supplement 1. *Bulletin du Jardin Botanique de l'Etat, Bruxelles* 18: 7-66.
- DEMARET, F. & LEROY, V. 1944. Mousses. *Exploration Parc National Albert, Mission J. Lebrun 1937-38*, Fasc. 6: 1-65.
- DE SLOOVER, J.-L. 1973. Note de bryologie africaine I. *Brachydontium, Atractylocarpus, Amphidium, Rhabdoweisia, Tayloria, Rhacocarpus, Trachypodopsis*. *Bulletin du Jardin Botanique National de Belgique* 43: 333-348.
- DE SLOOVER, J.-L. 1975a. Note de bryologie africaine II. *Oreoweisia, Eriopus, Cyclodictyon, Hookeriopsis, Lepidopilidium, Lepidopilum*. *Bulletin du Jardin Botanique National de Belgique* 45: 103-124.
- DE SLOOVER, J.-L. 1975b. Note de bryologie africaine III. *Physcomitrella magdalenae* sp. nov. *Bulletin du Jardin Botanique National de Belgique* 45: 131-135.
- DE SLOOVER, J.-L. 1975c. Note de bryologie africaine IV. *Breutelia*. *Bulletin du Jardin Botanique National de Belgique* 45: 237-271.
- DE SLOOVER, J.-L. 1975d. Note de bryologie africaine V. *Anacolia, Leiomela, Cyathophorella*. *Bulletin du Jardin Botanique National de Belgique* 45: 313-321.
- DE SLOOVER, J.-L. 1976a. Note de bryologie africaine VI. *Hylocomiopsis*. *Bulletin du Jardin Botanique National de Belgique* 46: 379-385.
- DE SLOOVER, J.-L. 1976b. Note de bryologie africaine VII. *Pseudephemerum, Bryohumbertia, Eucladium, Streptopogon, Ptychomitrium, Rhachithecium, Antitrichia, Pterogonium, Lindigia, Distichophyllum*. *Bulletin du Jardin Botanique National de Belgique* 46: 427-447.
- DE SLOOVER, J.-L. 1977a. Note de bryologie africaine VIII. *Neckera, Neckeropsis*. *Bulletin du Jardin Botanique National de Belgique* 47: 31-48.
- DE SLOOVER, J.-L. 1977b. Note de bryologie africaine IX. *Andreaea, Racomitrium, Gymnostomiella, Thuidium*. *Bulletin du Jardin Botanique National de Belgique* 47: 155-181.
- DE SLOOVER, J.-L. 1979. Note de bryologie africaine X. *Blindia, Pilopogon, Bryoerythrophyllum, Orthodontium, Orthostichidium, Oligotrichum*. *Bulletin du Jardin Botanique National de Belgique* 49: 393-408.
- DE SLOOVER, J.-L. 1982. Note de bryologie africaine XI. *Campylopus* subgen. *Pseudocampylopus*. *Bulletin du Jardin Botanique National de Belgique* 52: 95-113.

- DE SLOOVER, J.-L. 1983. Note de bryologie africaine XII. *Porotrichum* et *Porothamnium*. *Bulletin du Jardin Botanique National de Belgique* 53: 97-152.
- DE SLOOVER, J.-L. 1986. Note de bryologie africaine XIII. Polytrichaceae. *Bulletin du Jardin Botanique National de Belgique* 56: 241-300.
- DE SLOOVER, J.-L. 1987. Note de bryologie africaine XIV. *Leptodontium*. *Bulletin du Jardin Botanique National de Belgique* 57: 425-451.
- DE SLOOVER, J.-L. 2003. Illustrations de Mousses Africaines. *Scripta Botanica Belgica* 28: 1-224.
- ELLIS, L. 2007. Bryophyte flora of Uganda. 7. Calymperaceae and Octoblepharaceae. *Journal of Bryology* 29: 259-274.
- ENGEL, J.J. & MERRILL, G.L.S. 2004. Austral Hepaticae. 35. A taxonomic and phylogenetic study of *Telaranea* (Lepidoziaceae), with a monograph of the genus in temperate Australasia and commentary on Extra-Australasian taxa. *Fieldiana Botany, New Series* 44: 1-265.
- FISCHER, E. 1993a. Taxonomic results of the BRYOTROP-Expedition to Zaïre and Rwanda. 3. Description of Collecting Sites. The Vegetation of Kahuzi-Biega-National Park/Zaïre, Nyungwe forest and Virunga-Volcanoes. *Tropical Bryology* 8: 13-37.
- FISCHER, E. 1993b. Taxonomic results of the BRYOTROP-Expedition to Zaire and Rwanda. 4. A preliminary check-list of the Hepaticae and Anthocerotae in Central Africa (Zaïre-Rwanda-Burundi). *Tropical Bryology* 8: 39-49.
- FISCHER, E. 1993c. Taxonomic results of the BRYOTROP-Expedition to Zaire and Rwanda. 10. Trichocoleaceae, Geocalycaceae, Acrobolbaceae, Balantiopsidaceae, Lepidoziaceae (*Telaranea*, *Arachniopsis*), Calypogeiaceae, Adelanthaceae, Porellaceae, Jubulaceae, Marchantiaceae (*Dumortiera*), Polytrichaceae. *Tropical Bryology* 8: 83-98.
- FISCHER, E. 1993d. Taxonomic Results of the BRYOTROP Expedition to Zaire and Rwanda. 8. *Riccia vulcanicola* E. Fischer (subgenus *Ricciella*, sectio *Cavernosae*), a new species from the Virunga Volcanoes, Rwanda. *Tropical Bryology* 8: 69-74.
- FISCHER, E. 1995. The genera *Ricciocarpus* and *Riccia* (Hepaticae: Ricciaceae) in Rwanda. *Fragmenta Floristica et Geobotanica* 40: 93-111.
- FISCHER, E. 2007. The genera *Anthoceros*, *Phaeoceros* and *Notothylas* (Anthocerotopsida) in Rwanda. *Beihefte zur Nova Hedwigia* 131: 81-89.
- FISCHER, E. & HINKEL, H. 1990. Untersuchungen zur Einnischung der Herpetofauna in Nebelwäldern Ruandas (Zentralafrika). *Mainzer Geographische Studien* 34: 485 - 502.
- FISCHER, E. & HINKEL, H. 1992. *Die Natur Ruandas. La Nature du Rwanda*. Mainz: 1-457.

- FISCHER, E. & KILLMANN, D. 2008. Illustrated Field Guide to the Plants of Nyungwe National Park, Rwanda. *Koblenz Geographical Colloquia, series Biogeographical Monographs* 1: 1-772.
- FRAHM, J.-P. 2012. The Dicranaceae, Rhabdoweisiaceae and Leucobryaceae of Uganda. *Archive for Bryology* 125: 1-18. <http://archive-for-bryology.com/>
- FRAHM, J.-P. & GRADSTEIN, S.R. 1986. An apparatus for drying bryophytes in the field. *Bryological Times* 38: 5.
- FREY, W., STECH, M. & FISCHER, E. 2009. *Syllabus of Plant Families – A. Engler's Syllabus der Pflanzenfamilien. Part 3: Bryophytes and seedless Vascular Plants*. 13. Edition. 419 pp. Stuttgart.
- GEISSLER, P. 1996. Holotypes des taxa nouveaux décrits par P. Tixier dans *Tropical Bryology* 11. Corrections. *Tropical Bryology* 12: 237.
- GRADSTEIN, S.R. 1975. A Taxonomic Monograph of the Genus *Acrolejeunea* (Hepaticae). *Bryophytorum Bibliotheca* 4: 1-162.
- GRADSTEIN, S.R. & PINHEIRO DA COSTA, D. 2003. The Hepaticae and Anthocerotae of Brazil. *Memoirs of the New York Botanical Garden* 87: 1-318.
- GRADSTEIN, S.R., PÓCS, T. & VAÑA, J. 1983. Disjunct Hepaticae in Tropical America and Africa. *Acta Botanica Hungarica* 29 (1-4): 127-171.
- GRADSTEIN, R.S. & VANDEN BERGHEN, C. 1985. *Schiffneriolejeunea* sect. *Pappeanae* en Afrique. In: GRADSTEIN, S.R. 1985. Contribution to a Monograph of the Lejeuneaceae, Subfamily Ptychanthoideae. *Beiheft Nova Hedwigia* 80: 173-194.
- GRADSTEIN, S.R., WILSON, E., ILIKU-BORGES, A.L. & HEINRICHS, J. 2006. Phylogenetic relationships and neotenic evolution of *Metzgeriopsis* (Lejeuneaceae) based on chloroplast DNA sequences and morphology. *Botanical Journal of the Linnean Society* 151: 293-308.
- GROLLE, R. 1959. Beitrag zur Kenntnis der afrikanischen Lophocoleen. *Transactions of the British Bryological Society* 3: 582-598.
- GROLLE, R. 1962. Monographie der Lebermoosgattung *Leptoscyphus*. *Mitteilungen Nova Acta Leopoldina* 161, 25: 1-143.
- GROLLE, R. 1970. *Jamesoniella* und Verwandte. *Feddes Repertorium* 82: 1-96.
- GROLLE, R. 1993. Taxonomic results of the BRYOTROP expedition to Zaïre and Rwanda. 9. Pallaviciniaceae, Haplomitriaceae. *Tropical Bryology* 8: 75-82.
- GROLLE, R. & VANDEN BERGHEN, C. 1970. *Clasmatocolea vermicularis* (Lehm.) Grolle au Burundi. *Revue Bryologique et Lichénologique* 37: 385.
- HASEGAWA, J. 1993. Taxonomic results of the BRYOTROP-Expedition to Zaïre and Rwanda. 5. Anthocerotae. *Tropical Bryology* 8: 51-52.
- HEDENÄS, L. 2005. Bryophyte flora of Uganda. 4. Rhytidiaceae, Hylocomiaceae and Hypnaceae (Part 1). *Journal of Bryology* 27: 55-66.

- HEDENÄS, L. & WATLING, C. 2005. Bryophyte flora of Uganda. 5. Hypnaceae (Part 2). *Journal of Bryology* 27: 153-160.
- HEINRICHS, J., GRADSTEIN, S.R., WILSON, R. & SCHNEIDER, H. 2005. Towards a natural classification of liverworts (Marchantiophyta) based on the chloroplast gene *rbcL*. *Cryptogamie, Bryologie* 26: 131-150.
- HENTSCHEL, J., PATON, J.A., SCHNEIDER, H. & HEINRICHS, J. 2007. Acceptance of *Liochlaena* Nees and *Solenostoma* Mitt., the systematic position of *Eremonotus* Pearson and notes on *Jungermannia* L. s.l. (Jungermanniiidae) based on chloroplast DNA sequence data. *Plant Systematics and Evolution* 268: 147-157.
- HODGETTS, N.G. 2008. A morphological revision of the genus *Herbertus* S.Gray (Herbertaceae, Marchantiophyta) in Africa, including the East African islands. *Journal of Bryology* 30: 239-263.
- JONES, E.W. 1952. African Hepatics I. The genus *Cyathodium* in Africa. *Transactions of the British Bryological Society* 2: 55-61.
- JONES, E.W. 1953a. African Hepatics II. *Leptocolea* with hyaline-margined leaves. *Transactions of the British Bryological Society* 2: 144-157.
- JONES, E.W. 1953b. African Hepatics III. *Cololejeunea* and *Leptocolea* with dentate leaves. *Transactions of the British Bryological Society* 2: 158-163.
- JONES, E.W. 1953c. African Hepatics V. *Lophocolea*, with Notes on *Chiloscyphus* and *Leptoscyphus*. *Transactions of the British Bryological Society* 2: 172-202.
- JONES, E.W. 1954a. African Hepatics VI. *Euosmolejeunea*. *Transactions of the British Bryological Society* 2: 375-379.
- JONES, E.W. 1954b. African Hepatics VII. The genus *Cheilolejeunea*. *Transactions of the British Bryological Society* 2: 380-392.
- JONES, E.W. 1954c. African Hepatics X. *Leptocolea* and *Cololejeunea*. *Transactions of the British Bryological Society* 2: 408-438.
- JONES, E.W. 1956. African Hepatics XI. The genus *Riccardia* in Tropical Africa. *Transactions of the British Bryological Society* 3: 74-84.
- JONES, E.W. 1957. African Hepatics XIII. The Ricciaceae in Tropical Africa. *Transactions of the British Bryological Society* 3: 208-227.
- JONES, E.W. 1960. African Hepatics XIV.. Some *Cephaloziellas* of lowland Tropical Africa. *Transactions of the British Bryological Society* 3: 430-440.
- JONES, E.W. 1962. African Hepatics XV. *Plagiochila* in Tropical Africa. *Transactions of the British Bryological Society* 4: 254-325.
- JONES, E.W. 1963. African Hepatics XVI. *Porella* in Tropical Africa. *Transactions of the British Bryological Society* 4: 446-461.
- JONES, E.W. 1964. African Hepatics XVII. *Gongylanthus* in Tropical Africa. *Transactions of the British Bryological Society* 4: 649-652.

- JONES, E.W. 1967. African Hepatics XVIII. *Taxilejeunea*, and *Lejeunea* with eplicate perianths. *Transactions of the British Bryological Society* 5: 289-304.
- JONES, E.W. 1968. African Hepatics XIX. The *Lejeunea flava* complex. *Transactions of the British Bryological Society* 5: 548-562.
- JONES, E.W. 1969. African Hepatics XXI. *Microlejeunea*, *Chaetolejeunea* and *Pleurolejeunea*. *Transactions of the British Bryological Society* 5: 775-789.
- JONES, E.W. 1970. African Hepatics XXII. *Dicranolejeunea* and *Marchesinia*. *Transactions of the British Bryological Society* 6: 72-81.
- JONES, E.W. 1972. African Hepatics XXIII. Some species of *Lejeunea*. *Journal of Bryology* 7: 23-45.
- JONES, E.W. 1974a. African Hepatics XXIV. Lejeuneaceae: some new or little-known species and extensions of range. *Journal of Bryology* 7: 545-561.
- JONES, E.W. 1974b. African Hepatics XXVI. The *Lejeunea eckloniana* complex. *Journal of Bryology* 8: 77-91.
- JONES, E.W. 1975. African Hepatics XXVII. *Bazzania*. *Journal of Bryology* 8: 299-316.
- JONES, E.W. 1976a. African Hepatics XXVIII. *Schistochila* Dum. *Journal of Bryology* 9: 33-41.
- JONES, E.W. 1976b. African Hepatics XXIX. Some new or little-known species and some extensions of range. *Journal of Bryology* 9: 43-54.
- JONES, E.W. 1977. African Hepatics XXX. The genus *Radula* Dumortier. *Journal of Bryology* 9: 461-504.
- JONES, E.W. 1980. African Hepatics XXXII. Some little-known species and extensions of range. *Journal of Bryology* 11: 311-323.
- JONES, E.W. 1982. African Hepatics XXXIII. Some new Lejeuneaceae. *Journal of Bryology* 12: 37-48.
- JONES, E.W. 1985a. African Hepatics XXXIV. Some little-known or new Lejeuneaceae. *Journal of Bryology* 13: 385-398.
- JONES, E.W. 1985b. African Hepatics XXXV. Some new or little-known species and some noteworthy records. *Journal of Bryology* 13: 497-508.
- JONES, E.W. 1987. African Hepatics XXXVII. Some new or little-known species and extensions of range. *Journal of Bryology* 14: 503-509.
- JONES, E.W. 1988. African Hepatics XXXVIII. *Cheilolejeunea* subgenus *Strepsilejeunea* (Spruce) Schust., with special reference to East Africa. *Journal of Bryology* 15: 149-160.
- JONES, E.W. 1989. African Hepatics XXXIX. Some dioicous species of *Lejeunea*. *Journal of Bryology* 15: 665-673.
- JONES, E.W. 1990. African Hepatics XL. An artificial key to the genera of African Hepatics. *Journal of Bryology* 16: 9-40.

- JONES, E.W. & PÓCS, T. 1987. African Hepatics. XXXVI. Three new species of *Colura*. *Journal of Bryology* 14: 495-501.
- KIS, G. & PÓCS, T. 1997. Oil body studies on African Hepaticae. *Journal of the Hattori Botanical Laboratory* 81: 175-242.
- KRUIJT, R.CH. 1988. A Monograph of the Genera *Dicranolejeunea* and *Acanthocoleus*. *Bryophytorum Bibliotheca* 36: 1-136.
- LONG, D.G. 2006. Revision of the genus *Asterella* P.Beauv. in Eurasia. *Bryophytorum Bibliotheca* 63: 1-299.
- MAGILL, R.E. 1981. Bryophyta. Part 1: Mosses. Fascicle 1: Sphagnaceae-Grimmiaceae. In: LEISTNER, O.A. (Ed.). *Flora of Southern Africa*: VI-XV, 1-291.
- MAGILL, R.E. 1987. Bryophyta Part 1 Mosses, Fascicle 2 Gigaspermaceae-Bartramiaceae. In: LEISTNER, O.A. (Ed.). *Flora of Southern Africa*: IV-IX, 293-443.
- MAGILL, R.E. & VAN ROOY, J. 1998. Bryophyta Part 1 Mosses, Fascicle 3 Erpodiaceae-Hookeriaceae. In: LEISTNER, O.A. (Ed.). *Flora of Southern Africa*: IV-VII, 445-622.
- MALOMBE, I. 2009. Studies on African *Cheilelejeunea* (Lejeuneaceae) I: New species and new combinations. *Acta Botanica Hungarica* 51: 315-328.
- MECKLENBURG, A. F. HERZOG ZU 1909. *Ins innerste Afrika. Bericht über den Verlauf der Deutschen wissenschaftlichen Zentral-Afrika-Expedition 1907-1908*. Leipzig: 1-476.
- MEENKS, J.L.D. & PÓCS, T. 1985. East African Bryophytes IX. Aneuraceae. *Abstracta Botanica* 9: 79-98.
- MÜLLER, F., WIGGINTON, M.J. & O'SHEA, B.J. 2000. New bryophyte taxon records for tropical countries IV. *Tropical Bryology* 18: 199-202.
- O'SHEA, B. 2005. Bryophyte floras in the digital age – floras for those who can't afford books. Web version of a talk given at the XVIIIth International Botanical Congress in Vienna, 19 July 2005 http://www.nhm.ac.uk/hosted_sites/bbstbg/ibctalk.htm
- PEROLD, S.M. 1986. Studies in the genus *Riccia* (Marchantiales) from Southern Africa. 7. *R. congoana* and its synonyms. *Bothalia* 16: 193-201.
- PEROLD, S.M. 1990. Studies in the genus *Riccia* (Marchantiales) from Southern Africa. 21. *Riccia stricta* stat. nov. and *R. purpurascens*, subgenus *Ricciella*. *Bothalia* 20: 197-206.
- PEROLD, S.M. 1992. Studies in the genus *Riccia* (Marchantiales) from Southern Africa. 24. *R. moenkemeyeri*, subgenus *Ricciella*: new records. *Bothalia* 22: 19-22.
- PEROLD, S.M. 1993. Taxonomic Results of the BRYOTROP Expedition to Zaire and Rwanda. 7. Ricciaceae. *Tropical Bryology* 8: 55-68.
- PEROLD, S.M. 1995. A survey of the Ricciaceae of tropical Africa. *Fragmenta Floristica Geobotanica* 40: 53-91.
- PEROLD, S.M. 1998. Metzgeriales-Fossombroniaceae *Fossombronia rwandaensis*, a new species from tropical Africa. *Bothalia* 28: 45-49.

- PEROLD, S.M. 1999. Hepatophyta. Part 1: Marchantiopsida. Fascicle 1: Marchantiidae. In: LEISTNER, O.A. (Ed.). *Flora of Southern Africa*: III-VI, 1-252.
- PEROLD, S.M. 2001. Studies in the liverwort family Aneuraceae (Metzgeriales) from southern Africa. 1. The genus *Aneura* and its local representatives. *Bothalia* 31: 167-173.
- PEROLD, S.M. 2002. Studies in the liverwort family Aneuraceae (Metzgeriales) from southern Africa. 3. *Riccardia compacta*. *Bothalia* 31: 15-19.
- PEROLD, S.M. 2003. Studies in the liverwort family Aneuraceae (Metzgeriales) from southern Africa. 5. *Riccardia amazonica*. *Bothalia* 33: 99-104.
- PETIT, E. & SYMOENS, F. 1974. Les bryophytes des bois artificiels de *Cupressus* et d'*Acacia* au Burundi. Analyse factorielle de la végétation bryophytique. *Bulletin du Jardin Botanique National de Belgique* 44: 219-247.
- PÓCS, T. 1975. New or little known epiphyllous liverworts I. *Cololejeunea* from Tropical Africa. *Acta Botanica Academiae Scientiarum Hungaricae* 21: 353-375.
- PÓCS, T. 1980. The epiphytic biomass and its effect on the water balance of two rain forest types in the Uluguru Mountains (Tanzania, East Africa). *Acta Botanica Academiae Scientiarum Hungaricae* 26: 143-167.
- PÓCS, T. 1984a. Synopsis of the African Lepidozioideae K. Müll. *Proceedings of the Third Meeting of the Bryologists from Central and East Europe, Praha*: 107-119.
- PÓCS, T. 1984b. New or little known epiphyllous liverworts III. The genus *Aphanolejeunea* Evans in Tropical Africa. *Cryptogamie, Bryologie-Lichénologie* 5(3): 239-267.
- PÓCS, T. 1985. East African Bryophytes VII. The Hepaticae of the Usambara Rain Forest Project Expedition, 1982. *Acta Botanica Hungarica* 31: 113-133.
- PÓCS, T. 1990. The exploration of the East African bryoflora. *Tropical Bryology* 2: 177-191.
- PÓCS, T. 1991. The genus *Colura* in East Africa. *Bulletin of the British Bryological Society* 57: 33-39.
- PÓCS, T. 1993. Taxonomic results of the BRYOTROP-Expedition to Zaïre and Rwanda. 12. Metzgeriaceae, Plagiochilaceae, Lejeuneaceae (the non-epiphyllous collections). *Tropical Bryology* 8: 105-125.
- PÓCS, T. 1994a. Taxonomic results of the BRYOTROP-Expedition to Zaire and Rwanda. 27. Lepidoziaceae. *Tropical Bryology* 9: 123-130.
- PÓCS, T. 1994b. Taxonomic results of the BRYOTROP-Expedition to Zaïre and Rwanda. 28. Lejeuneaceae, a ramicolous collection. *Tropical Bryology* 9: 131-136.
- PÓCS, T. 2002. East African Bryophytes XVIII. Two new Lejeuneaceae (Hepaticae) from the Aberdare Mountains, Kenya. *Polish Botanical Journal* 47: 11-20.
- PÓCS, T. & BERNECKER, A. 2009. Overview of *Aphanolejeunea* (Jungermanniopsida) after 25 years. *Polish Botanical Journal* 54: 1-11.